



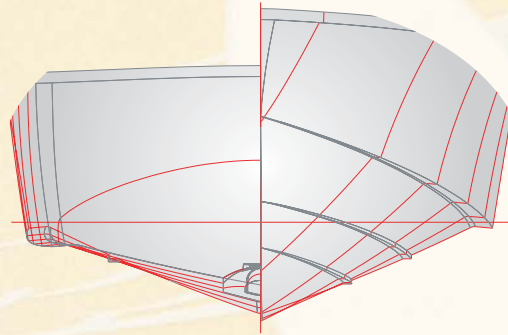
The New
BACK COVE 30
A Downeast Tradition

DESIGN CONCEPT

The Back Cove 30 will make her debut in the spring of 2010. She is the 5th design in the Back Cove range and will take the place of the venerable Back Cove 29: the model that launched Back Cove in 2003. Our mission to design simple, low maintenance boats that are easy on the eyes, easy on yard expenses and easy on the fuel bills, continues with this exciting new design.

Like other Back Cove models, the 30 will have a single diesel engine and bow thruster combination that is more fuel efficient than most twin engine vessels of comparable size and displacement. New diesels of the type installed in this and other Back Cove models are cleaner-running and quieter, thanks to modern fuel injection technologies. Cruise speeds with her standard 315 hp engine are in the 22 knot range and optional engines are available that will raise cruise speeds above the mid-twenties.

Back Cove uses resin infusion technology in the construction



of fiberglass parts. This increases strength while reducing weight, making our designs more fuel efficient. The Back Cove 30 hull is a vee-style with downward turning chines forward. This allows the boat to get on plane easily and with very little bow rise. Secondary spray rails and a flared bow throw water down and away from the hull at speed to ensure a dry deck and windshield. Aft, the hull turns to a 16 degree deadrise and her single propeller runs in a shallow propeller pocket to reduce draft and running angle.

A slight tumble home in her aft topside sections and signature spoon-shaped bow add elegance to her profile. Her transom door is flush mounted and opens outwards to allow socializing with crew and guests in the largest possible cockpit.

INTERIOR

Below deck, the Back Cove 30 offers a practical vee-berth layout. When not being used for sleeping, two seat back cushions swing athwartships to form a bolster and create a comfortable seating arrangement at the inlaid salon table.

Aft and to starboard is her functional galley. Features include a solid surface countertop, stainless steel sink, alcohol/electric stove, microwave oven and fridge. There are many drawers and lockers for storage. Opposite and to port a fully molded head compartment has a fresh water electric flush MSD and a pull out shower faucet.

On her helm deck, the Back Cove 30 offers clean sight lines for all of her passengers and crew. Large windows, a signature feature of the Back Cove range, fill this area with light and air. With raised seating for the mate and elevated seating on both the port and starboard settees, everyone will enjoy the view along the way. An optional helm deck trim package doubles the size

of the helm deck table. The Back Cove 30's side decks are a study in safety and ergonomics. Sturdy hand rails are always within reach, a slight rise in the deck bulwark to prevent a foot from slipping overboard, an aggressive diamond patterned anti-skid surface and extra high perimeter rails all add to the feeling of security on her deck. Forward a deep anchor locker offers ample storage for lines, fenders and ground tackle.

In her cockpit, molded seating creates a large volume of storage within the seat boxes and an equally large space below the cockpit sole. A convenient swim platform and transom door create an ideal space for family and friends to gather and to enjoy those memorable times that only boating has to offer.



PRELIMINARY BACK COVE 30 STANDARD EQUIPMENT LIST

2011 Model Year

Mechanical Systems

- Yanmar LP 315 hp engine and marine gear
- Electronic single lever engine control
- Engine control panel with alarms and hour meter
- Emergency cross over switch
- Internal sea strainer
- Fuel Filter
- Engine room lighting
- 1.5" Aquamet shaft
- 4 Blade NiBrAl propeller
- PSS Dripless shaft log
- Electric trim tabs
- Tilting helm pump driven hydraulic steering
- Hot and Cold pressurized water (110V and engine heated)
- SidePower bow thruster with joy stick control, 88 lbs. thrust
- Marelon sea valves on underwater thru hulls
- 160 gallon fuel tank with 2" fill
- Fireboy extinguisher system
- Macerator with overboard discharge

Hull

- Advanced prop pocket hull design
- Back Cove white iso-npg gelcoat
- Vinylester backup resin
- Resin infused hull with PVC foam core sandwich
- Awlgrip boot top
- Encapsulated foam stringers

Deck

- Port & starboard molded steps leading to side & fore deck
- Molded-in seating in cockpit port and starboard
- Transom door on centerline
- Teak accent stripe on cabin side
- Back Cove white iso-npg gelcoat with graystone anti-skid on walking surfaces
- Resin infused balsa core sandwich structure
- Lewmar hatch over salon with screen
- (4) opening Port lights with screens
- FRP hard top with anodized aluminum windows and opening windows port, starboard and center. Pilot hatch overhead.
- Hand rails on hard top port and starboard
- (3) windshield wipers with washer system
- Horn
- Compass, illuminated
- Running lights
- Anchor locker
- Anchor platform with roller
- Mooring cleats (2) forward, (4) spring line and two aft, pop-up style
- Custom 1 1/4" 316L stainless steel bow rail
- Bentley's helm seat
- Mates bench seat to port
- Raised L-settee to port with backrest
- Raised settee seating aft of helmsman with inlaid table
- Swim platform and swim ladder

- Hot and cold cockpit shower
- Self bailing cockpit

Electrical Systems

- AC and DC control panels with polarity indicator
- DC system battery management switching
- DC breakers for electronics
- 110V AC 30 amp shorepower with 50 foot cord set
- Galvanic isolator
- Battery Charger
- (3) 31 DCM house battery
- (1) 31 engine start battery
- (2) 12VDC bilge pumps
- 12V outlet at helm
- Bonding system with zinc anode
- Cockpit courtesy lights
- GFI protected 110V circuits

Galley

- Origo Alcohol / 110V single burner stove
- Front opening AC/DC fridge
- Galley sink with single lever faucet & drop in cover
- Solid surface countertop
- Countertop cabinet
- Microwave built into cabinet
- Drawer and doors below counter

Head

- Built-in vanity with sink
- Solid surface countertop
- Mirror
- Pull out single lever faucet / shower
- Shower drain / pump system
- Fresh water electric MSD with holding tank
- Waste tank monitor
- Macerator for overboard discharge
- Pump out fitting on deck
- Stainless steel opening port with screen
- Vent Fan

Cabin

- Varnished Cherry interior
- Dinette with backrest cushions
- Round table with inlay
- V-berth with filler cushion
- Shelves above berth
- Cedar lined hanging locker
- Reading light in dinette / berth area
- Cherry hull ceilings
- "Teak and Holly" laminate cabin sole
- Overhead lighting
- XM Satellite Radio Ready stereo system with CD and MP3Jack. Interior / cockpit speakers with wired remote
- Storage under dinette and forward berth

BACK COVE 30

Cockpit seating to suit today's recreational boating lifestyles. Built-in seating is as comfortable as it is practical, with open storage bins in all seats. Below the cockpit sole, a large open lazarette is available for storage of bulky items.

Wide side decks and heavy duty hand rails for safety and ease of movement from the cockpit to the bow. On her helm deck, raised seating surfaces offer great sight lines for all to enjoy.

Fore deck and anchoring systems well laid out for cruising boaters who regularly set and retrieve anchors. A deep anchor locker suits all ground tackle and also accommodates fenders and additional dock lines.



Outstanding mechanical access. Her entire helm deck sole rises on a hydraulic lift to expose the engine compartment below. Service point access on single diesel engine installations is exceptional.

Her owners will find plenty of space for the navigational electronics options.

In her salon, a clever arrangement can quickly be converted from seating to sleeping. Seat backs swing athwartships to form a bolster so that family and friends can gather at the elegant high gloss, inlaid table.



SPECIFICATIONS

Length (Overall) 33'11" (10.34 M)
 Length (Hull) 30'6" (9.3 M)
 Beam (MAX) 11'2" (3.4 M)
 Displacement (full est.) 12,000 lbs (5.45 tonnes)

Fuel tank capacity 160 gallons (600 liters)
 Water tank capacity 40 gallons (150 liters)
 Holding tank capacity 30 gallons (113 liters)
Designed to ABYC, NMMA, USCG, ISO Category "B" standards.